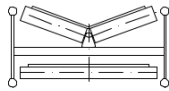
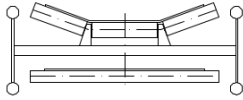


## MODEL N



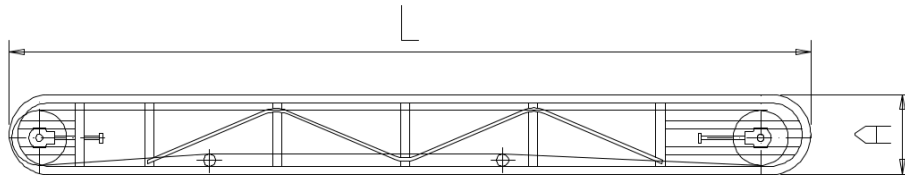
Straight horizontal or inclined rubber belt conveyor that runs over pairs of rollers mounted on ball bearings with a tubular lattice structure frame

## MODEL 3N



Straight horizontal or inclined rubber belt conveyor that runs over pairs of rollers mounted on ball bearings with a tubular lattice structure frame

N-3N  
STRAIGHT



N-3N  
INCLINED

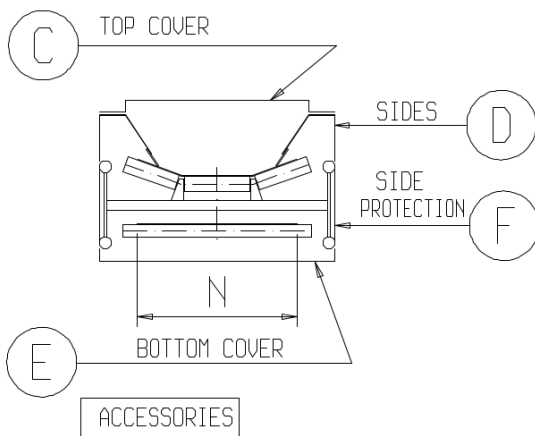
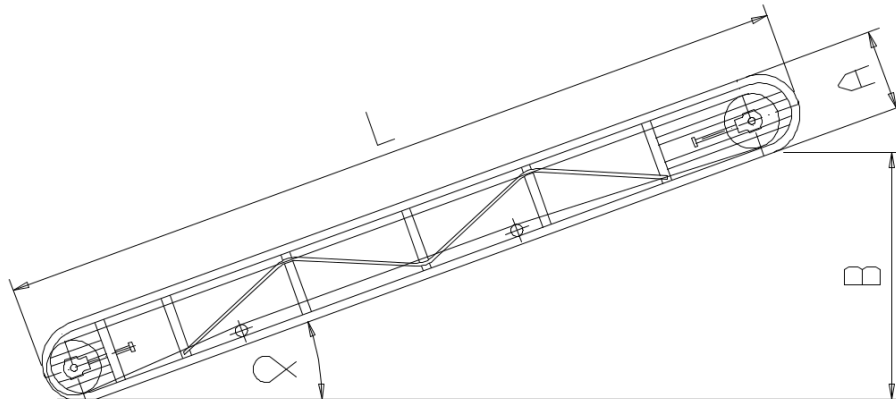


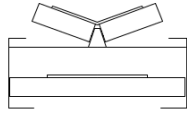
Diagram of belt conveyor type N 3N  
The dimensions in mm indicated in the table, the lengths and the possible inclination are defined on the basis of customer requirements.

A	N	L	B	C	D	E	F	incl. α
320	by request	by request	by request	by request	by request	by request	by request	
400								
440								

Data necessary for technical evaluation:

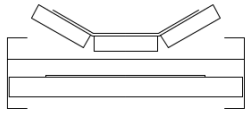
- Type and morphology of material to be transported
- Quantity of material to be transported
- Dimensions (in design)

### MODEL NU



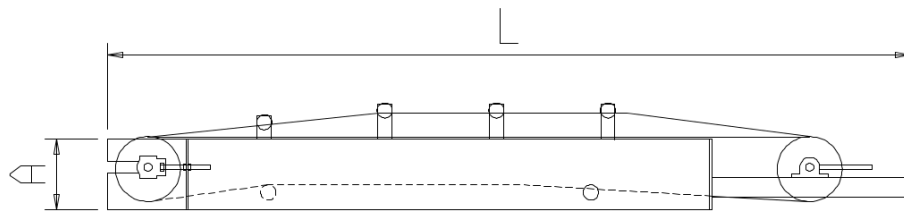
Straight horizontal or inclined rubber belt conveyor that runs on pairs of rollers mounted on ball bearings with U shaped sheet metal frame.

### MODEL 3NU

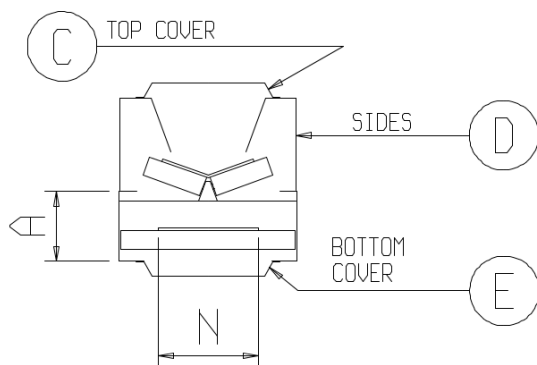
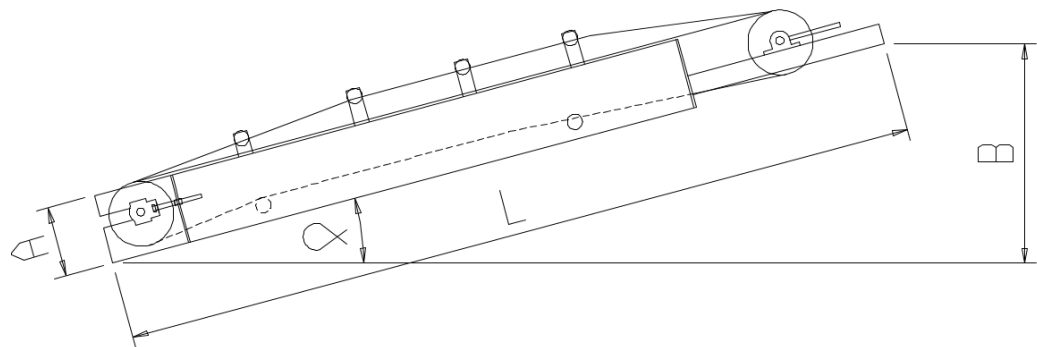


Straight horizontal or inclined rubber belt conveyor that runs on pairs of rollers mounted on ball bearings with U shaped sheet metal frame.

NU-3NU  
STRAIGHT



NU-3NU  
INCLINED



ACCESSORIES

Diagram of belt conveyor type NU 3NU  
The dimensions in mm indicated in the table, the lengths and the possible inclination are defined on the basis of customer requirements.

A	N	L	B	C	D	E	incl. $\alpha$
160	by request	by request	by request	by request	by request	by request	
200							
250							

Data necessary for technical evaluation:

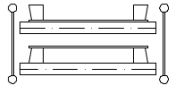
- Type and morphology of material to be transported
- Quantity of material to be transported
- Dimensions (in design)

## MODELS NS-NSS



Conveyor with a horizontal loading plane and a lifting section inclined with respect to the support plane (and a horizontal unloading part) with rubber belt that runs on rollers mounted on ball bearings with tubular lattice structure frame

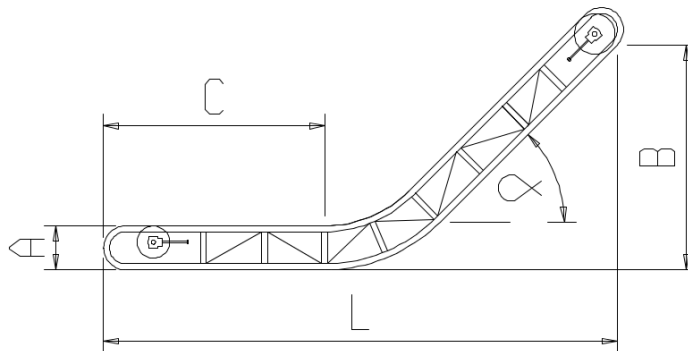
## MODELS NS-NSS SPONDAFLEX



Conveyor with a horizontal loading plane and a lifting section inclined with respect to the support plane (and a horizontal unloading part) with rubber belt equipped with transverse strips and wavy sides that allow considerable hourly flow rate even with significant inclination.

The rubber belt slides on rollers mounted on ball bearings with a tubular lattice structure frame

NS  
1 CURVE



NSS  
2 CURVE

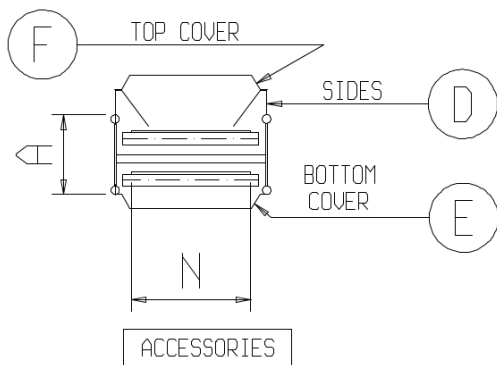
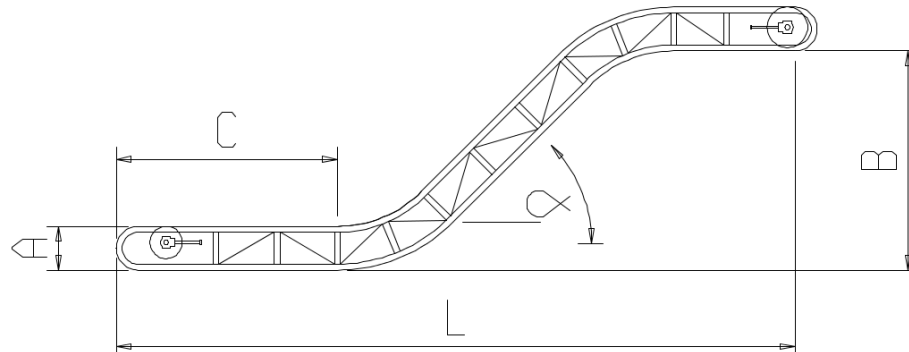


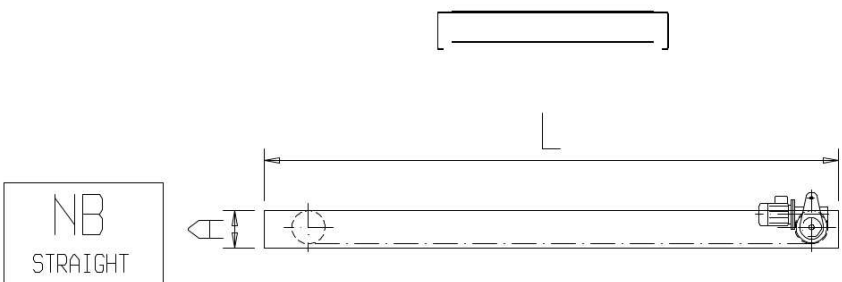
Diagram of belt conveyor type NS NSS  
The dimensions in mm indicated in the table, the lengths and the possible inclination are defined on the basis of customer requirements.

A	N	L	B	C	D	E	F	incl. $\alpha$
320	by request	by request	by request	by request	by request	by request	by request	
400								
440								

Data necessary for technical evaluation:

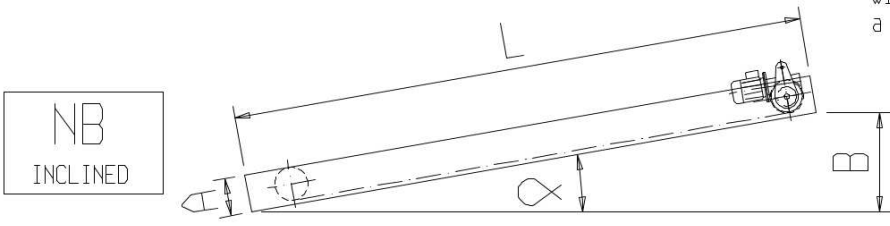
- Type and morphology of material to be transported
- Quantity of material to be transported
- Dimensions (in design)

# MODELS NB-NBS-NBSS

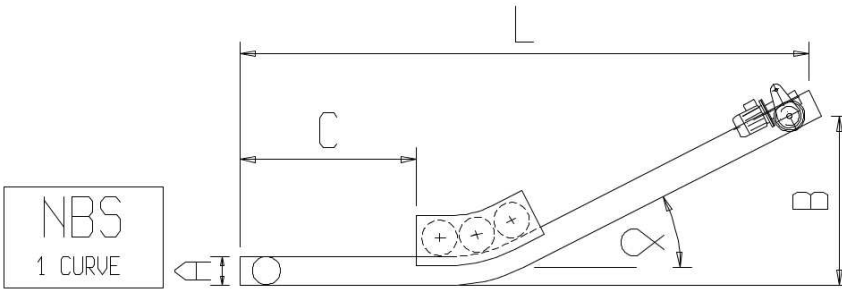


NB  
STRAIGHT

Straight horizontal or inclined conveyor with PVC belt that slides on a plane with a frame made of shaped sheet metal.

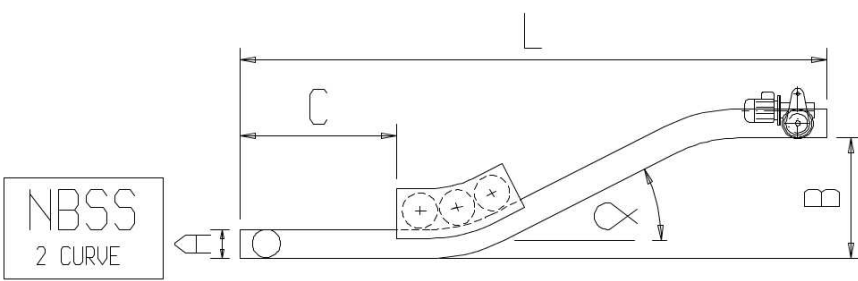


NB  
INCLINED



NBS  
1 CURVE

Conveyor with horizontal loading and a part with lifting inclined to one or two curves with respect to the support surface. With PVC belt that slides on a plane with a frame made of shaped sheet metal.



NBSS  
2 CURVE

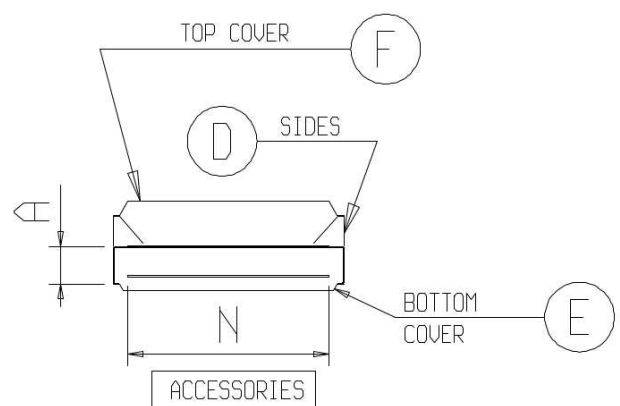


Diagram of belt conveyor type NB - NBS - NBSS  
The dimensions in mm indicated in the table, the lengths and the possible inclination are defined on the basis of customer requirements.

A	N	L	B	C	D	E	F	incl. $\alpha$
130	by request	by request	by request	by request	by request	by request	by request	
170								
250								

Data necessary for technical evaluation:  
 -Type and morphology of material to be transported  
 -Quantity of material to be transported  
 -Dimensions (in design)